



BUILDBPS: AN UPDATE ON THE 10-YEAR FACILITY MASTER PLAN

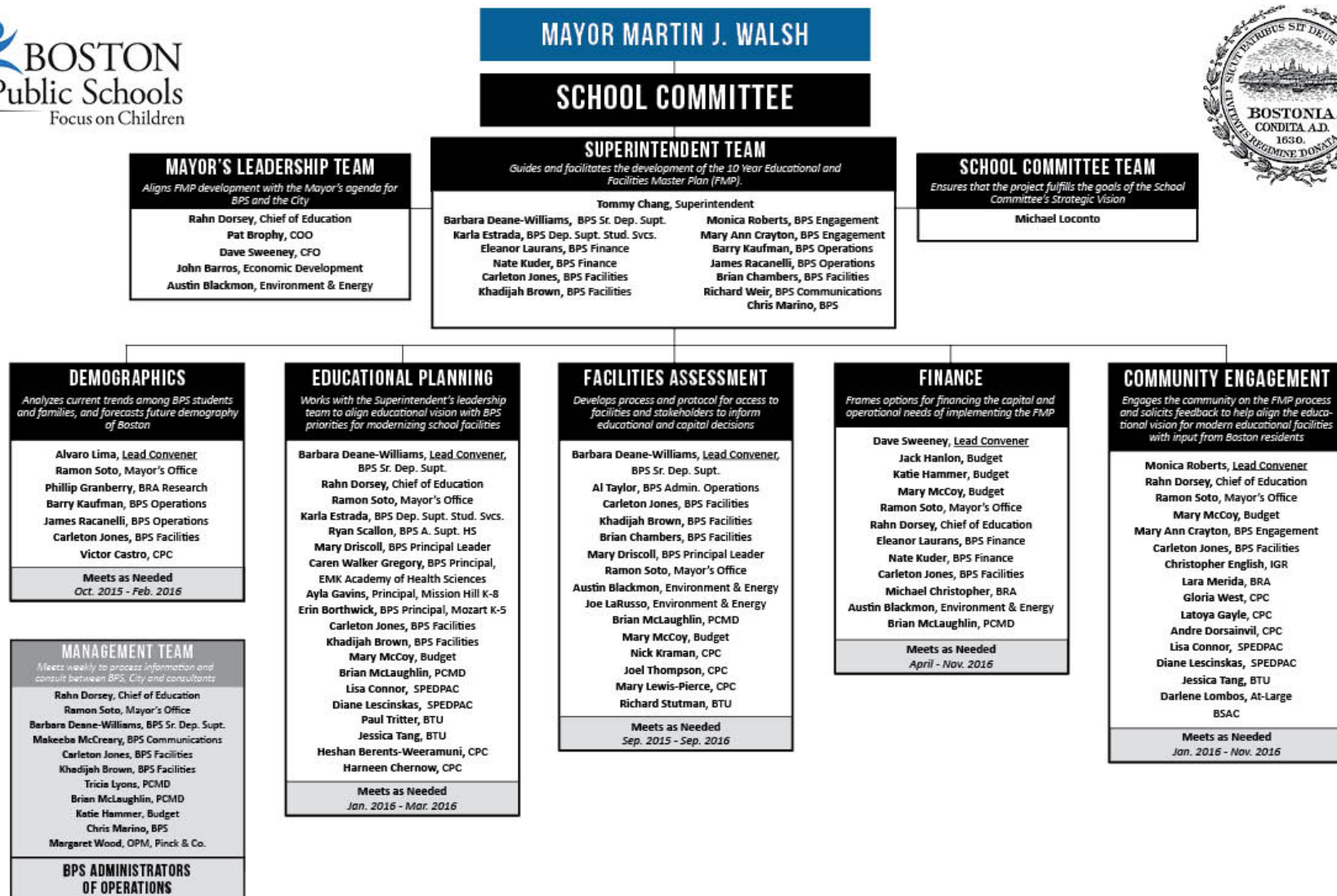
June 4, 2016

Based on a presentation to the Boston School Committee on May 11, 2016, with changes as noted.

Today's Update

1. Project Structure and Timeline Recap
2. Key Accomplishments
3. What We Are Learning
4. Community Engagement Strategies
5. Next Steps

1. Project Structure



1. Timeline Recap:

Where are we in the process?

September 2015: BuildBPS launched

Fall 2015-present: Advisory Committees meet

Jan. - March 2016: Assessment process piloted in 19 schools

April-June 2016: Assessments of remaining 108 buildings

June 4, 2016: Today's update

2. Key Accomplishments

DEMOGRAPHICS	EDUCATIONAL PLANNING	FACILITY ASSESSMENT	FINANCE	COMMUNITY ENGAGEMENT
<p>Reviewed BRA and BPS data</p> <p>Reviewed and commented on initial analysis</p>	<p>Reviewed key initiatives</p> <p>Met to share vision for educational areas including:</p> <ul style="list-style-type: none"> Universal Design Learning Grade Configurations Feeder patterns Pre-Kindergarten Technology Learning Commons <p>Future meetings:</p> <ul style="list-style-type: none"> Special Education PE, Athletics and Food Vocational Education 	<p>Piloted initial assessment of 3 buildings</p> <p>Developed draft Assessment Tool</p> <p>Tested Assessment Tool on 19 buildings</p> <p>Coordinated and initiated assessment of 108 remaining buildings</p>	<p>Reviewing options for financing, including:</p> <ul style="list-style-type: none"> Bonds Massachusetts School Building Authority (MSBA) Dedicated revenue Public/Private partnerships 	<p>Developed and reviewed communication tools</p> <p>Developed survey for community input: http://bit.ly/1SJBNm</p> <p>Planning public Advisory Committee update in June</p>

3. What we are learning: Facilities Assessment

Walk-throughs of 19 prototype buildings for both facility condition and current educational use have confirmed:

- Building infrastructures are generally sound, but the facilities needs are extensive due to overall condition and age of buildings.
- Smaller buildings in particular, especially at the K-8 levels, have uneven distribution of spaces such as cafeterias and auditoriums.
- Schools cite lack of appropriate spaces for critical educational needs, particularly student support services.
- Further upgrades may trigger code compliance requirements.

3. What we are learning: Grade Configurations

The lack of coherence in grade configurations presents both educational and operational challenges.

GRADE CONFIGURATION	NUMBER OF SCHOOLS	GRADE CONFIGURATION	NUMBER OF SCHOOLS
K0-1	5	6-8	12
K0-4	1	6-9	1
K0-12	1	6-12	3
K-1	3	7-12	3
K-5	49	9-10	1
K-6	1	9-11	1
K-8	17	9-12	20
2-8	1	10-12	1
3-8	1	12+	2
5-12	1		

3. What we are learning:

Demographics and Enrollment

- Enrollment has declined steadily over the past 10 years, due in part to enrollment loss in grades 5-8.
- Specialized programs are scattered around the city.
- Charters continue to be a significant and competitive factor.
- BPS enrollment is not keeping pace with Boston's population growth.



3. What we are learning:

Tenets for maintaining robust enrollment

- Ensure quality schools close to home
- Reduce transitions, simplify grade configurations
- Create program models that lead to equity for all students
- Increase capacity for early childhood education
- Provide capacity for future growth

3. What we are learning*:

Approaches to funding the Facility Master Plan

Today, the City pays for capital improvements to BPS schools through its five-year capital investment plan. This plan is supported through:

- The issuance of General Obligation Bond debt and
- Massachusetts School Building Authority (MSBA) awards

These two resources alone will not be enough to cover the vast capital needs of our system, and the City's borrowing is limited by our future ability to pay off our debt.

The Finance Committee is looking at a broad range of funding strategies, including the City's authority to generate additional revenue, improving the City's share of MSBA resources, public/private partnerships, and other strategic opportunities to increase revenue potential.

* This slide is an addition to the May 11th School Committee presentation for the June 4th Community Forum.

4. Community Engagement Strategies

- Community Survey in nine languages <http://bit.ly/1SJSBNm>
- E-News updates: sign up at <http://www.bostonpublicschools.org/buildbps>
- Feedback Opportunities:
 - Engage on social media using #BuildBPS
 - August 16: Citywide event
 - September-October: Neighborhood events

5. Next steps: Upcoming milestones

June 2016	Assessment of remaining school buildings
July 2016	Assessment and other data analyzed
August 2016	Public event focused on the project
September 2016	Assessments reviewed by School Site Councils
Fall 2016	Updates presented to the School Committee
January 2017	Final report on Master Plan complete

5. Next steps: What will the completed Master Plan look like?

I. Project Overview

- Goals and objectives
- Process
- Participants

II. Findings

- In each of the five data areas

III. Recommendations

- Alignment with educational priorities
- Construction and renovation priorities
- Funding options

Thank you!